

# Annual Report – Montana Fibershed 2022

## Our Organization

2022 has been a busy year of forward momentum for Montana Fibershed. As an organization, we have grown by officially transitioning to a 501(c)3 membership organization, launching a membership campaign, offering our first scholarship, connecting members through a Zoom Knit-A-Long (KAL), and hosting our first big event, the Farm-to-Fashion event. Our all-volunteer Board of Directors has worked hard to successfully launch these important initiatives.

## Accomplishments and Activities

**Becoming a 501(c)3 non-profit organization.** Early in the year, having completed all the necessary paperwork, we received the official recognition of our non-profit status from the IRS. This important step will help us to grow our organization by allowing our members to make tax-deductible contributions to Montana Fibershed.

**Launching a membership campaign.** The Membership Committee had a busy year with many successes. Under the leadership of Julie Tome, the committee outlined a two-tiered membership structure for business and supporting members. Business members are vetted through an application process to assure their alignment with the mission and goals of Montana Fibershed. Business members are supported with an entry in our online directory and links to their websites and contact information. Supporting members make a donation of their choice, and receive all information about Montana Fibershed's activities, news, and volunteer opportunities. Systems for tracking, receiving payments, and sending thank-you notes to members were developed.

**Offering a scholarship.** Under the auspices of the Events & Education Committee, Montana Fibershed offered its first scholarship in the amount of \$120. This was awarded to member Mary Warner to further her education in the fiber arts. Mary attended the bi-annual conference of the Montana Association of Weavers and Spinners in June, 2022, and took workshops in spinning, weaving and dying. Mary is planning a presentation of her learning experiences to share with her local guild and with Montana Fibershed.

**Creating connections through a Zoom KAL (Knit-A-Long).** Member Madeline Keller-King volunteered to help organize this relaxed social and educational event. The Knit-A-Long was a weekly gathering for six weeks that took place from January through mid-February, and encouraged knitting mittens with Montana Wool. Madeline led us through the project with her own recently-published pattern, the Wooly Walker Mitts. Board Member Carol Treadwell-Steitz offered a yarn scholarship of her own Montana Merino wool for one KAL participant.

**Local Meet & Greets at Montana Fiber Festivals and other venues.** Directors and other Montana Fibershed members traveled the state over the warm weather months to chat with

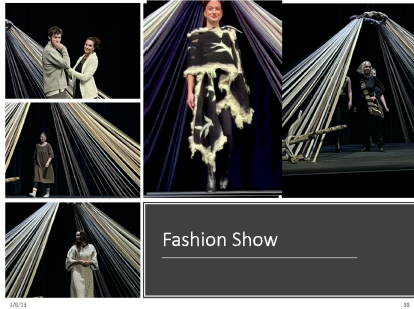
interested parties about the purpose and goals of Montana Fibershed. In addition to many interesting conversations, we collected contact information and project ideas from potential new members. We were also able to spread the news of our big fall event, the Farm-to-Fashion show, hand out entry forms and generally encourage participation. Venues visited included: The Wool Mill, Belgrade; Crazy Mountain Fiber Festival, Big Timber; MAWS conference, Helena; Copper K Festival, Whitehall; Fiberfest Eureka, and the Montana Woolgrowers Lamb Jam, Bozeman.

**Farm-to-Fashion, Montana Fibershed's first big event.** This event was a long-time coming! Postponed in the fall of 2021 due to another surge of Covid, our event proved well worth the wait! In fact, the delay was beneficial, as more makers and creators had time to finish up their local-fiber garments. Our fashion show entries in 2022 doubled over the previous year's. Held at the Emerson Center for the Arts and Culture in Bozeman on October 8, the Farm-to-Fashion event was a beautiful showcase for Montana fiber. The fashion show included the creations of 29 designers and makers with over 40 garments entered in six juried categories, from small accessories to full ensembles. A prize was awarded in each category; additionally, there was a people's choice award, voted on by the audience. Four local guest designers were also featured in the show, with garments and accessories made with Montana materials, as well as up-cycled and sustainable materials, and local labor.

Before the fashion show, a panel of distinguished experts shared their knowledge of Montana's current textile economy, its intersection with regenerative agricultural practices, and their visions for its future development.

Rounding out the day was the first ever Montana Fibershed Marketplace, a sale of Montana fiber supplies and finished goods. The vendors included Montana Fibershed business members, whom we are delighted to support. The Bozeman Weavers Guild joined in with demonstrations of yarn spinning and cloth making. The general public in attendance seemed amazed at the expertise of the makers and producers. It was a great day to consider the question: "Where does my clothing come from?"

Our sponsors for this event were Fibershed (No.Cal) with a generous grant, and Duckworth Co, a Montana wool clothing business who provided funds for printing our program and helped in many other ways. Also thanks are due to the Montana Fibershed directors and many other member volunteers and friends for their generous participation and support.



## Financial Report:

**Opening Balance:** **\$5,594\***

\*includes grant of \$3,705 from Fibershed.org received in 2021 for Farm-to-Fashion event

**Ending Balance:** **\$3,487**

### Income:

Contributions, Individual Members	\$ 745
Contributions, Business Members	\$1,382
2023 Memberships paid in advance:	\$ 150
Farm-to-Fashion event:	\$1,350
Event sponsorship, Duckworth Co.	\$ 575
<b>Total Income:</b>	<b>\$4,202</b>
<b>Total Income including opening balance:</b>	<b>\$9,796</b>

### Expenses:

Farm-to-Fashion event:	\$4,842
(Full event financials available on request)	
Operating expenses:	\$ 673
Other event & educational expenses	\$ 187
Scholarship	\$ 120
Technology, IT, Communications	\$ 487

**Total Expenses:** **\$6,309**

**Gain/Loss:** **\$3,487**



## **Membership**

With gratitude, we acknowledge our 2022 member donors, including our Business Members:

Allison Grove Fiber Arts  
Da'Morh Fiberarts  
Duckworth Co.  
EarthStar Farm  
Fiber LLC  
Fox Farm Homestead  
Harvest Calling Farms  
Helen Harris Fiber Artist  
IND Hemp  
Joseph's Coat Yarns and Fibers  
Lone Pine Wool Emporium  
Mountains of Wool  
Mrs. Hartman's Farmhouse Market  
Nevermore Ranch Creations

Painted KC Ranch  
Prairie Shepherd  
Ranch Goddess Estates  
Ranching Traditions Fibers  
Reece Billing  
Roving Ram Ranch  
Shepherd's Gulch Yarn and Fiber  
Steitzhof Merinos  
Stillwater Fibers  
Stix  
The Daily Yarn  
The Wool Mill / Serenity Sheep Farm Stay  
The Montana Wool Barn  
Wooly Witch of the West  
Wuthering Flats  
Yarn Bar LLC

## **2022 Board of Directors**

Carol Treadwell-Steitz, Chair  
Barbara French, Vice Chair  
Heather Johnson, Secretary (till 5/22)  
Amanda Shine, Treasurer  
Helen Harris,  
Kami Noyes  
LaVonne Stucky  
Julie Tome

Respectfully submitted,  
Barbara French